

April 13, 2018

www.encoreenergy.com

Phone: 402-905-4000 or 855-4NATGAS

Physical Spot Prices – April 12, 2018

	Price	Change	Natural Gas Equivalent
Natural Gas – H. Hub	\$2.686/MMBtu	+\$0.011	\$2.69
Propane – Mont Belvieu	\$0.807/gal	+\$0.063	\$8.82
Crude Oil – WTI Cush	\$67.070/bl	+\$3.500	\$11.56
No.2 Heating Oil – NYH	\$83.110/bl	+\$5.140	\$14.27
No.6 Resid. – G. Coast	\$57.800/bl	+\$2.530	\$9.19
Cent App Coal (prev day)	\$59.200/ton	-\$0.800	\$2.37

Change is from previous week

U.S. Gas Rotary Rig Count for:

Week ending 4-06-18

This Week	194
Last Week	194
Last Year	165

Market Update is a weekly publication of Encore Energy Services, Inc. and is designed to provide industrial and commercial customers with the latest "Market News" in the natural gas industry. The information contained in this publication is intended as general business advice. This publication contains forward-looking material and is not intended for a specific business situation. If you would like copies of any previous reports, please contact your Sales Manager.

Futures Pricing

At the close of business Thursday, April 12, 2018 the future strip prices were as follows:

	This Week	Last Week	Change	Last Month	Change	Last Year	Change
	4/12/2018	4/05/2018		03/12/2018		4/12/2017	
NYMEX near month	\$2.686	\$2.675	+\$0.011	\$2.778	-\$0.092	\$3.187	-\$0.501
NYMEX 12-month strip	\$2.835	\$2.850	-\$0.015	\$2.932	-\$0.097	\$2.957	-\$0.122
NYMEX Winter strip	\$2.965	\$2.982	-\$0.017	\$3.050	-\$0.085	\$3.095	-\$0.130
NYMEX Summer strip	\$2.691	\$2.683	+\$0.008	\$2.712	-\$0.021	\$2.710	-\$0.019

Near month range for the week = \$2.621 - \$2.726

Current near month is May '18

12-month strip is May '18 – Apr '19

Summer strip is Apr '19 – Oct '19

Winter strip is Nov '18 – Mar '19

Near-Month Natural Gas Futures Prices (NYMEX) through Apr 12



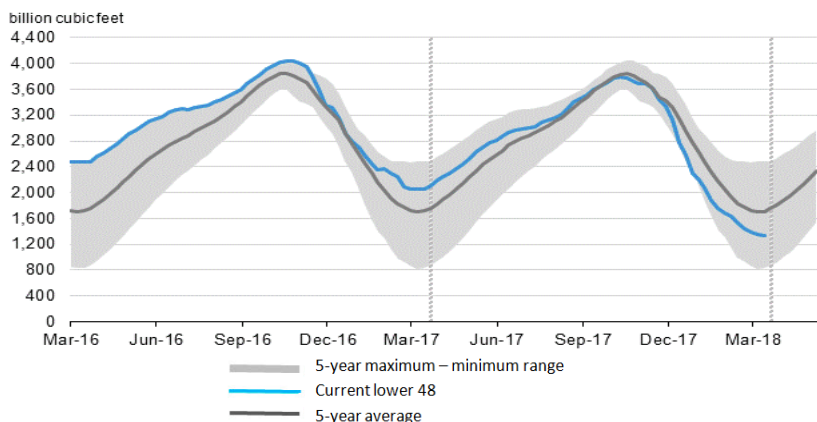
Storage Report

For the week ending April 6, 2018, natural gas storage reported by the Energy Information Administration (EIA) was (in Bcf):

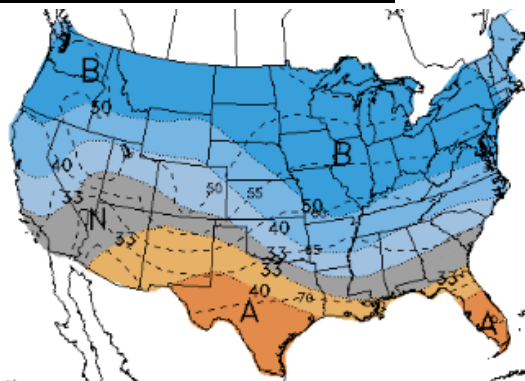
This Week	Last Week	Last Year	5 Yr. Ave.
1,335	1,354	2,060	1,710

Inventory vs. One Year ago: -35.2% Inventory vs. 5-Yr. Ave: -21.9%

Working Gas in Storage Compared to 5-Year Range



Temperature Forecast April 20 through Apr 26, 2018



For more information on anything addressed in this report, please contact your Sales Manager.

Sources: NOAA, EIA, NYMEX and Baker Hughes

Daily Nat Gas Use For U.S. Power Production (last 60 days)



Last 52 week Average = 26.4 Bcf/day

Last 30 day Average = 23.0 Bcf/day

% of U.S. Demand = 34%

% of U.S. Demand = 27%