

February 06, 2026

www.encoreenergy.com

Phone: 402-905-4000 or 855-4NATGAS

Physical Spot Prices – February 05, 2026

	Price	Change	Natural Gas Equivalent
Natural Gas – H. Hub	\$3.509/MMBtu	-\$0.409	\$3.509
Propane – Mont Belvieu	\$0.6343/gal	-\$0.0097	\$6.93
Crude Oil – WTI Cush	\$65.14/bl	+\$1.930	\$11.23
No.2 Heating Oil – NYH	\$82.74/bl	-\$1.310	\$14.20
No.6 Resid. – G. Coast	\$56.85/bl	+\$3.460	\$9.04
Cent App Coal (prev. day)	\$83.00/ton	+\$0.250	\$3.32

Change is from previous week

U.S. Rotary Rig Count for:

Week ending 01-30-26

	Gas	Oil
Current	125	411
Last Week	122	411
Last Year	98	479

Market Update is a weekly publication of Encore Energy Services, Inc. and is designed to provide industrial and commercial customers with the latest "Market News" in the natural gas industry. The information contained herein is intended as general business information. This publication contains forward-looking material and is not intended for a specific business situation. If you would like copies of previous reports, please visit our web-site or contact your Sales Manager.

Futures Pricing

At the close of business Thursday, February 05, 2026 the future strip prices were as follows:

	This Week 02/05/26	Last Week 01/29/26	Change	Last Month 01/05/26	Change	Last Year 02/05/25	Change
NYMEX near month	\$3.509	\$3.578	-\$0.409	\$2.893	+\$0.616	\$3.872	-\$0.363
NYMEX 12-month strip	\$3.900	\$3.977	-\$0.317	\$3.570	+\$0.330	\$3.965	-\$0.065
NYMEX Winter strip	\$4.347	\$4.324	-\$0.169	\$4.083	+\$0.264	\$4.277	+\$0.070
NYMEX Summer strip	\$3.599	\$3.742	-\$0.369	\$3.306	+\$0.293	\$3.724	-\$0.125

Near month range for the week = \$3.155 - \$4.395

Current near month is March '26

Summer strip is April '26 – Oct '26

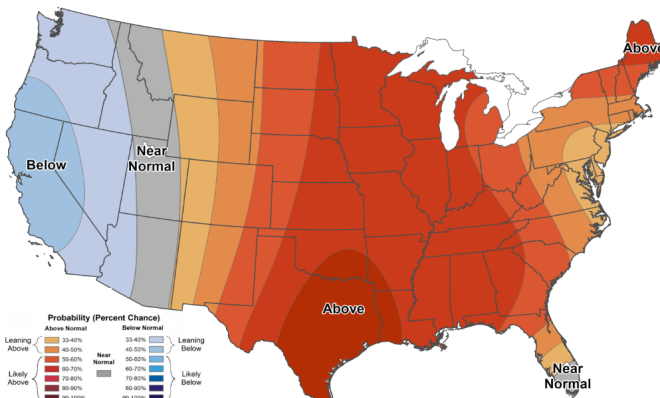
12-month strip is March '26 – February '27

Winter strip is Nov '26 – Mar '27

Near-Month Natural Gas Futures Prices (NYMEX) through Feb 05, 2026



Temperature Forecast Feb 13, 2026 through Feb 19, 2026



For more information on anything addressed in this report, please contact your Sales Manager.

Sources: NOAA, EIA, CME Group and Baker Hughes

Storage Report

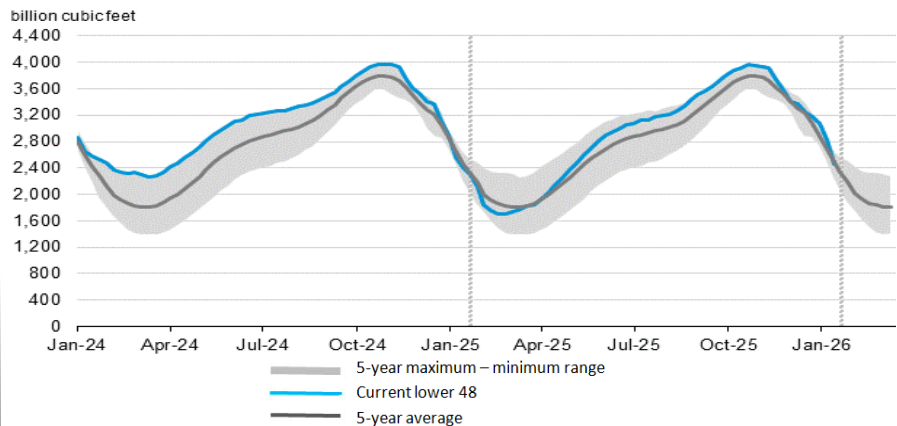
For the week ending Jan 30, 2026, natural gas storage reported by the Energy Information Administration (EIA) was as follows:

This Week	Last Week	Last Year	5 Yr. Ave.
2,463	2,823	2,422	2,490

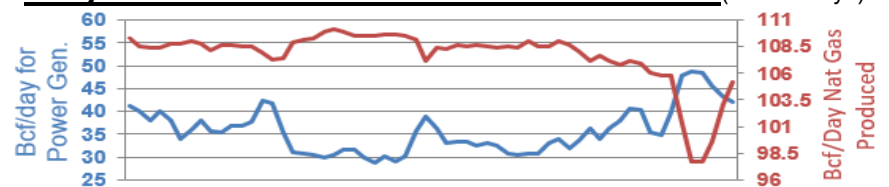
Change this week: -360 Bcf Change for the same week last year: -195 Bcf

Inventory vs. 1 Year ago: +1.7% Inventory vs. 5-Yr. Ave: -1.1%

Working Gas in Storage Compared to 5-Year Range



Daily Nat Gas Use For U.S. Power Production (last 60 days)



Last 52 week Average = 36.5 Bcf/day

Last 30 day Average = 38.2 Bcf/day

% of U.S. Demand = 40%

% of U.S. Demand = 30%