

February 25, 2022

www.encoreenergy.com

Phone: 402-905-4000 or 855-4NATGAS

Physical Spot Prices – February 24, 2022

	Price	Change	Natural Gas Equivalent
Natural Gas – H. Hub	\$4.568/MMBtu	+\$0.082	\$4.49
Propane – Mont Belvieu	\$1.3166/gal	+\$0.038	\$13.98
Crude Oil – WTI Cush	\$92.95/bl	-\$0.710	\$16.15
No.2 Heating Oil – NYH	\$103.18/bl	-\$1.190	\$17.92
No.6 Resid. – G. Coast	\$79.80/bl	+\$0.050	\$12.68
Cent App Coal (prev. day)	\$93.25/ton	\$0.000	\$3.73

Change is from previous week

U.S. Rotary Rig Count for:

Week ending 02-18-22

	Gas	Oil
Current	124	520
Last	118	516
Last Year	91	305

Market Update is a weekly publication of Encore Energy Services, Inc. and is designed to provide industrial and commercial customers with the latest "Market News" in the natural gas industry. The information contained herein is intended as general business information. This publication contains forward-looking material and is not intended for a specific business situation. If you would like copies of previous reports, please visit our website or contact your Sales Manager.

Futures Pricing

At the close of business Thursday, February 24, 2022 the future strip prices were as follows:

	This Week 02/24/22	Last Week 02/17/22	Change	Last Month 01/24/22	Change	Last Year 02/25/21	Change
NYMEX near month	\$4.568	\$4.486	+\$0.082	\$3.875	+\$0.693	\$2.898	+\$1.670
NYMEX 12-month strip	\$4.786	\$4.599	+\$0.187	\$4.030	+\$0.756	\$2.612	+\$2.174
NYMEX Winter strip	\$4.871	\$4.681	+\$0.190	\$4.154	+\$0.717	\$2.731	+\$2.140
NYMEX Summer strip	\$4.714	\$4.515	+\$0.199	\$3.942	+\$0.772	\$2.492	+\$2.222

Near month range for the week = \$4.293 - \$4.940

Current near month is Mar '22

12-month strip is Mar '22 – Feb '23

March 22 Settled today at \$4.568 down –5.5 cents for the day

Summer strip is Apr '22 – Oct '22

Winter strip is Nov '22 – Mar '23

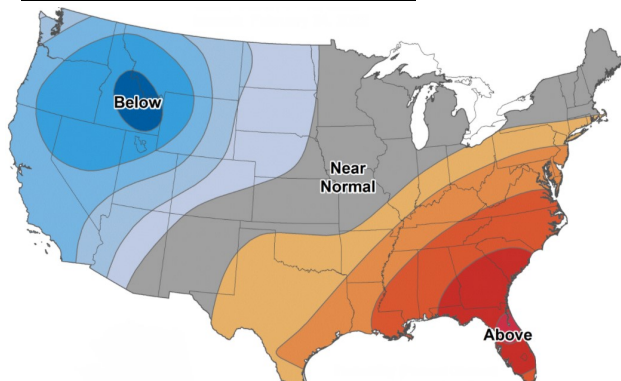
Near-Month Natural Gas

Futures Prices (NYMEX) through Feb 24



Temperature Forecast

Mar 04 through Mar 10, 2022



For more information on anything addressed in this report, please contact your Sales Manager.

Sources: NOAA, EIA, CME Group and Baker Hughes

Storage Report

For the week ending Feb 18, 2022, natural gas storage reported by the Energy Information Administration (EIA) was (in Bcf):

This Week	Last Week	Last Year	5 Yr. Ave.
1,782	1,911	1,991	1,996

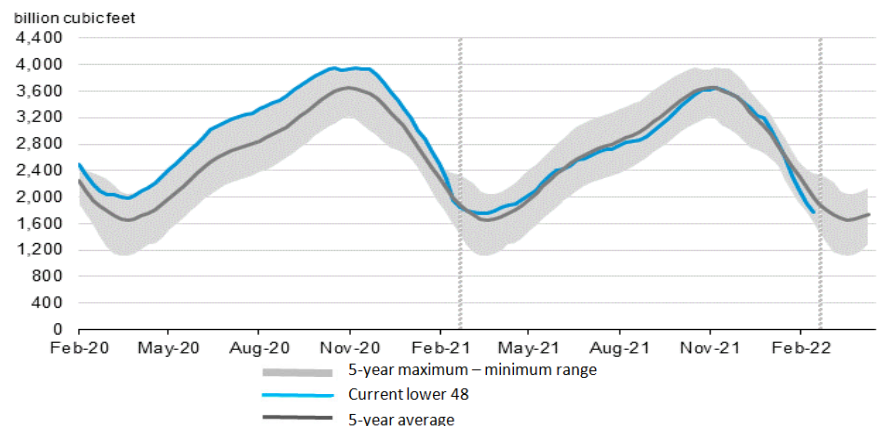
Change this week: -129 Bcf

Change for the same week last year: -324 Bcf

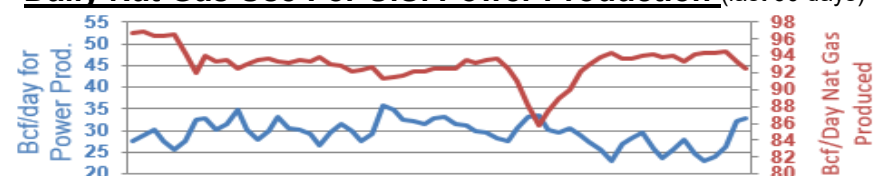
Inventory vs. 1 Year ago: -10.5%

Inventory vs. 5-Yr. Ave: -10.7%

Working Gas in Storage Compared to 5-Year Range



Daily Nat Gas Use For U.S. Power Production (last 60 days)



Last 52 week Average = 31.2 Bcf/day

Last 30 day Average = 28.5 Bcf/day

% of U.S. Demand = 39%

% of U.S. Demand = 27%