

April 08, 2022

www.encoreenergy.com

Phone: 402-905-4000 or 855-4NATGAS

Physical Spot Prices – April 07, 2022

	Price	Change	Natural Gas Equivalent
Natural Gas – H. Hub	\$6.359/MMBtu	+\$0.717	\$6.36
Propane – Mont Belvieu	\$1.2926/gal	-\$0.146	\$14.13
Crude Oil – WTI Cush	\$96.230/bl	-\$11.59	\$16.59
No.2 Heating Oil – NYH	\$131.15/bl	-\$9.910	\$22.51
No.6 Resid. – G. Coast	\$87.13/bl	-\$8.530	\$13.86
Cent App Coal (prev. day)	\$140.00/ton	\$0.000	\$5.60

Change is from previous week

U.S. Rotary Rigg Count for:

Week ending 04-01-22

	Gas	Oil
Current	138	533
Last	137	531
Last Year	91	337

Market Update is a weekly publication of Encore Energy Services, Inc. and is designed to provide industrial and commercial customers with the latest "Market News" in the natural gas industry. The information contained herein is intended as general business information. This publication contains forward-looking material and is not intended for a specific business situation. If you would like copies of previous reports, please visit our website or contact your Sales Manager.

Futures Pricing

At the close of business Thursday, April 07, 2022 the future strip prices were as follows:

	This Week 04/07/22	Last Week 03/31/22	Change	Last Month 03/07/22	Change	Last Year 04/07/21	Change
NYMEX near month	\$6.359	\$5.642	+\$0.717	\$4.858	+\$1.501	\$2.453	+\$3.906
NYMEX 12-month strip	\$6.327	\$5.607	+\$0.720	\$4.869	+\$1.458	\$2.585	+\$3.742
NYMEX Winter strip	\$6.532	\$5.785	+\$0.747	\$5.047	+\$1.485	\$2.731	+\$3.801
NYMEX Summer strip	\$4.422	\$3.975	+\$0.447	\$3.589	+\$0.833	\$2.390	+\$2.032

Near month range for the week = \$4.748 - \$5.464

Current near month is May '22

12-month strip is May '22 – Apr '23

Summer strip is Apr '23 – Oct '23

Winter strip is Nov '22 – Mar '23

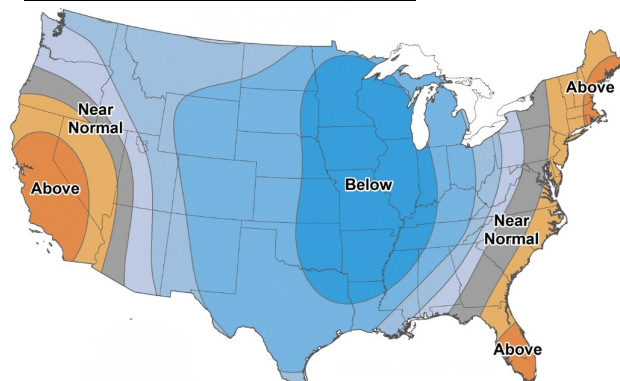
Near-Month Natural Gas

Futures Prices (NYMEX) through Apr 07



Temperature Forecast

Apr 14 through Apr 20, 2022



For more information on anything addressed in this report, please contact your Sales Manager.

Sources: NOAA, EIA, CME Group and Baker Hughes

Storage Report

For the week ending April 01, 2022, natural gas storage reported by the Energy Information Administration (EIA) was (in Bcf):

This Week	Last Week	Last Year	5 Yr. Ave.
1,382	1,415	1,781	1,667

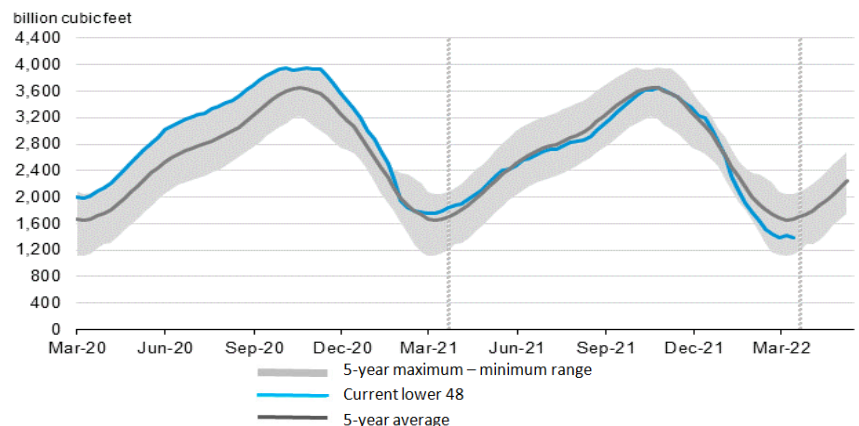
Change this week: -33 Bcf

Change for the same week last year: +19 Bcf

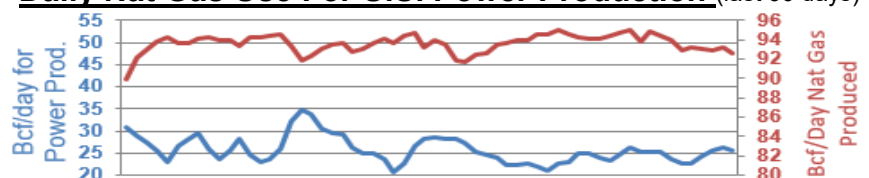
Inventory vs. 1 Year ago: -22.4%

Inventory vs. 5-Yr. Ave: -17.1%

Working Gas in Storage Compared to 5-Year Range



Daily Nat Gas Use For U.S. Power Production (last 60 days)



Last 52 week Average = 31.3 Bcf/day

Last 30 day Average = 24.6 Bcf/day

% of U.S. Demand = 39%

% of U.S. Demand = 31%