

April 17, 2026

www.encoreenergy.com

Phone: 402-905-4000 or 855-4NATGAS

Physical Spot Prices – April 16, 2026

	Price	Change	Natural Gas Equivalent
Natural Gas – H. Hub	\$2.647/MMBtu	-\$0.023	\$2.647
Propane – Mont Belvieu	\$0.7991/gal	+\$0.0431	\$8.73
Crude Oil – WTI Cush	\$91.29/bbl	-\$3.120	\$15.74
No.2 Heating Oil – NYH	\$138.09/bbl	-\$3.700	\$23.70
No.6 Resid. – G. Coast	\$79.92/bbl	+\$1.630	\$12.71
Cent App Coal (prev. day)	\$85.50/ton	-\$0.500	\$3.42

Change is from previous week

U.S. Rotary Rig Count for:

Week ending 04-10-26

	Gas	Oil
Current	127	411
Last Week	130	411
Last Year	105	472

Market Update is a weekly publication of Encore Energy Services, Inc. and is designed to provide industrial and commercial customers with the latest "Market News" in the natural gas industry. The information contained herein is intended as general business information. This publication contains forward-looking material and is not intended for a specific business situation. If you would like copies of previous reports, please visit our website or contact your Sales Manager.

Futures Pricing

At the close of business Thursday, April 16, 2026 the future strip prices were as follows:

	This Week 04/16/26	Last Week 04/09/26	Change	Last Month 03/16/26	Change	Last Year 04/16/25	Change
NYMEX near month	\$2.647	\$2.670	-\$0.023	\$3.011	-\$0.364	\$3.688	-\$1.041
NYMEX 12-month strip	\$3.390	\$3.446	-\$0.056	\$3.748	-\$0.358	\$4.020	-\$0.630
NYMEX Winter strip	\$3.934	\$4.027	-\$0.093	\$4.337	-\$0.403	\$4.307	-\$0.373
NYMEX Summer strip	\$3.223	\$3.290	-\$0.067	\$3.443	-\$0.220	\$3.488	-\$0.265

Near month range for the week = \$2.561 - \$2.723

Current near month is May '26

Summer strip is April '27 – Oct '27

12-month strip is May '26 – April '27

Winter strip is Nov '26 – Mar '27

Near-Month Natural Gas Futures Prices (NYMEX) through Apr 16, 2026



Storage Report

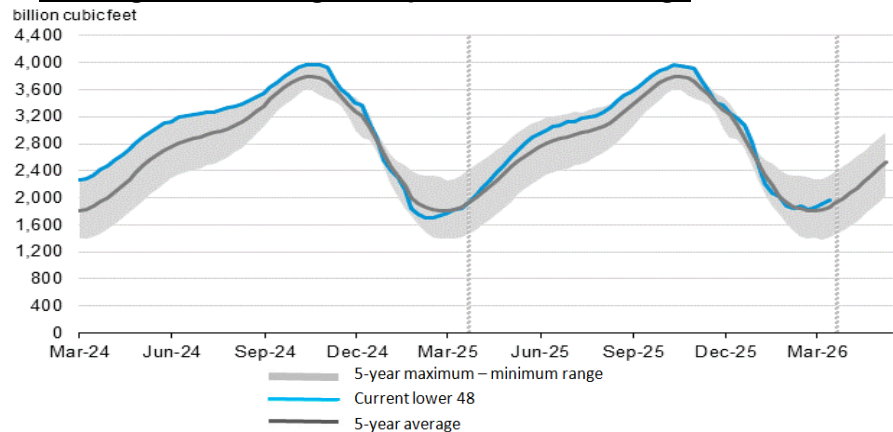
For the week ending Apr 10, 2026, natural gas storage reported by the Energy Information Administration (EIA) was as follows:

This Week	Last Week	Last Year	5 Yr. Ave.
1,970	1,911	1,844	1,862

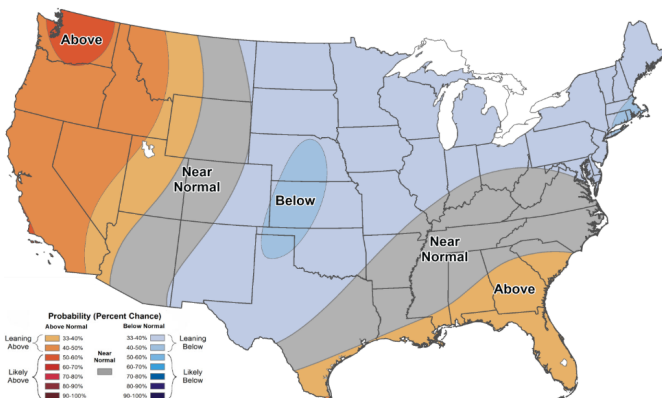
Change this week: +59 Bcf Change for the same week last year: +22 Bcf

Inventory vs. 1 Year ago: +6.8% Inventory vs. 5-Yr. Ave: +5.8%

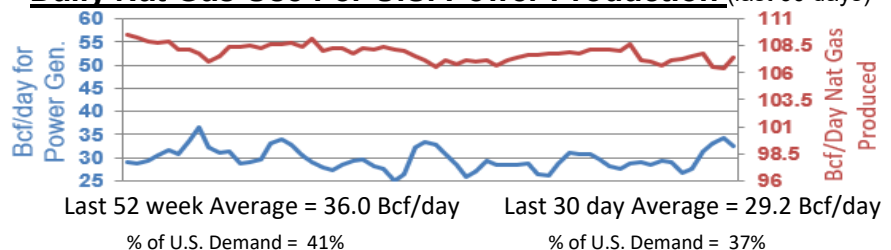
Working Gas in Storage Compared to 5-Year Range



Temperature Forecast Apr 24, 2026 through Apr 30, 2026



Daily Nat Gas Use For U.S. Power Production (last 60 days)



For more information on anything addressed in this report, please contact your Sales Manager.

Sources: NOAA, EIA, CME Group and Baker Hughes