

October 07, 2022

www.encoreenergy.com

Phone: 402-905-4000 or 855-4NATGAS

Physical Spot Prices – October 06, 2022

	Price	Change	Natural Gas Equivalent
Natural Gas – H. Hub	\$6.972/MMBtu	+\$0.098	\$6.972
Propane – Mont Belvieu	\$0.9179/gal	-\$0.075	\$10.03
Crude Oil – WTI Cush	\$87.76/bbl	+\$5.610	\$15.13
No.2 Heating Oil – NYH	\$133.33/bbl	+\$16.17	\$22.89
No.6 Resid. – G. Coast	\$60.81/bbl	+\$1.640	\$9.67
Cent App Coal (prev. day)	\$197.50/ton	-\$2.500	\$7.90

Change is from previous week

U.S. Rotary Rig Count for:

	Gas	Oil
Week ending 09-30-22		
Current	159	604
Last Week	160	602
Last Year	99	428

Market Update is a weekly publication of Encore Energy Services, Inc. and is designed to provide industrial and commercial customers with the latest "Market News" in the natural gas industry. The information contained herein is intended as general business information. This publication contains forward-looking material and is not intended for a specific business situation. If you would like copies of previous reports, please visit our website or contact your Sales Manager.

Futures Pricing

At the close of business Thursday, October 06, 2022 the future strip prices were as follows:

	This Week 10/06/22	Last Week 09/29/22	Change	Last Month 09/06/22	Change	Last Year 10/06/21	Change
NYMEX near month	\$6.972	\$6.874	+\$0.098	\$8.212	-\$1.240	\$4.014	+\$2.958
NYMEX 12-month strip	\$5.813	\$5.688	+\$0.126	\$6.647	-\$0.834	\$3.578	+\$2.235
NYMEX Winter strip	\$6.992	\$6.882	+\$0.110	\$8.045	-\$1.053	\$4.097	+\$2.895
NYMEX Summer strip	\$4.970	\$4.834	+\$0.136	\$5.647	-\$0.677	\$3.207	+\$1.763

Near month range for the week = \$6.305 - \$7.118

Current near month is November '22

Summer strip is Apr '23 – Oct '23

12-month strip is November '22 – October '23

Winter strip is Nov '22 – Mar '23

Near-Month Natural Gas Futures Prices (NYMEX) through October 06



Storage Report

For the week ending September 30, 2022, natural gas storage reported by the Energy Information Administration (EIA) was (in Bcf):

This Week	Last Week	Last Year	5 Yr. Ave.
3,106	2,977	3,271	3,370

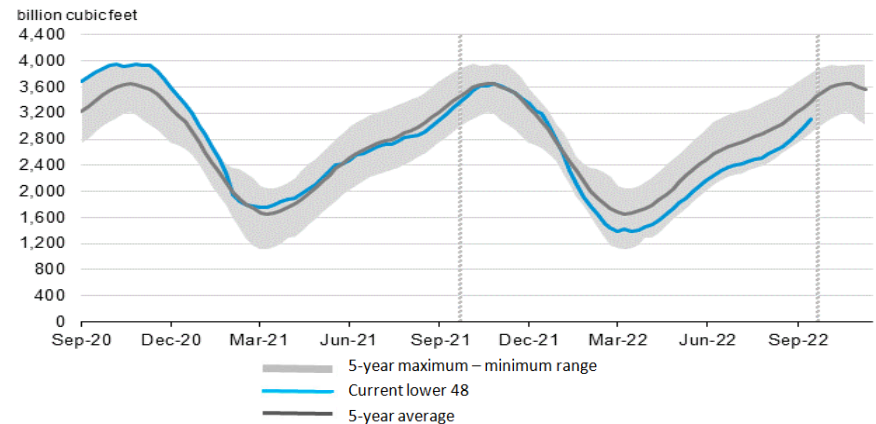
Change this week: +129 Bcf

Change for the same week last year: +114 Bcf

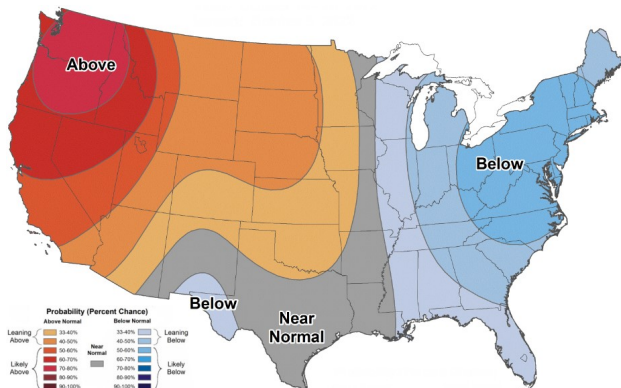
Inventory vs. 1 Year ago: -5.0%

Inventory vs. 5-Yr. Ave: -7.8%

Working Gas in Storage Compared to 5-Year Range



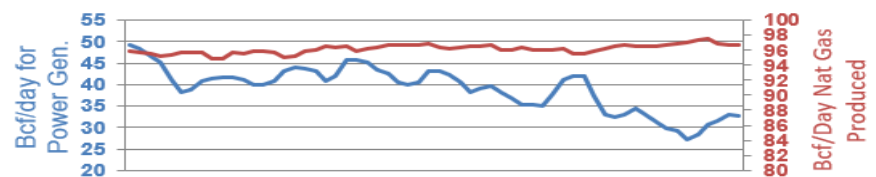
Temperature Forecast Oct 14 through Oct 20, 2022



For more information on anything addressed in this report, please contact your Sales Manager.

Sources: NOAA, EIA, CME Group and Baker Hughes

Daily Nat Gas Use For U.S. Power Production (last 60 days)



Last 52 week Average = 32.8 Bcf/day

Last 30 day Average = 35.4 Bcf/day

% of U.S. Demand = 40%

% of U.S. Demand = 49%