

December 20, 2024

[www.encoreenergy.com](http://www.encoreenergy.com)

Phone: 402-905-4000 or 855-4NATGAS

## Physical Spot Prices – December 19, 2024

	Price	Change	Natural Gas Equivalent
Natural Gas – H. Hub	\$3.584/MMBtu	+\$0.129	\$3.584
Propane – Mont Belvieu	\$0.7743/gal	-\$0.0046	\$8.46
Crude Oil – WTI Cush	\$70.58/bl	+\$0.290	\$12.17
No.2 Heating Oil – NYH	\$71.72/bl	+\$1.340	\$12.31
No.6 Resid. – G. Coast	\$66.55/bl	-\$0.080	\$10.58
Cent App Coal (prev. day)	\$75.40/ton	-\$0.100	\$3.02

**Change is from previous week**

## U.S. Rotary Rig Count for:

	Gas	Oil
Week ending 12-13-24		
Current	103	482
Last Week	102	482
Last Year	119	501

Market Update is a weekly publication of Encore Energy Services, Inc. and is designed to provide industrial and commercial customers with the latest "Market News" in the natural gas industry. The information contained herein is intended as general business information. This publication contains forward-looking material and is not intended for a specific business situation. If you would like copies of previous reports, please visit our website or contact your Sales Manager.

## Futures Pricing

At the close of business Thursday, December 19, 2024 the future strip prices were as follows:

	This Week 12/19/24	Last Week 12/12/24	Change	Last Month 11/19/24	Change	Last Year 12/19/23	Change
NYMEX near month	\$3.584	\$3.455	+\$0.129	\$3.228	+\$0.356	\$3.705	-\$0.121
NYMEX 12-month strip	\$3.334	\$3.299	+\$0.035	\$3.199	+\$0.135	\$3.435	-\$0.101
NYMEX Winter strip	\$4.043	\$4.058	-\$0.015	\$3.855	+\$0.188	\$4.038	+\$0.005
NYMEX Summer strip	\$3.197	\$3.177	+\$0.020	\$3.103	+\$0.094	\$3.252	-\$0.055

Near month range for the week = \$3.091 - \$3.645

Current near month is January '25

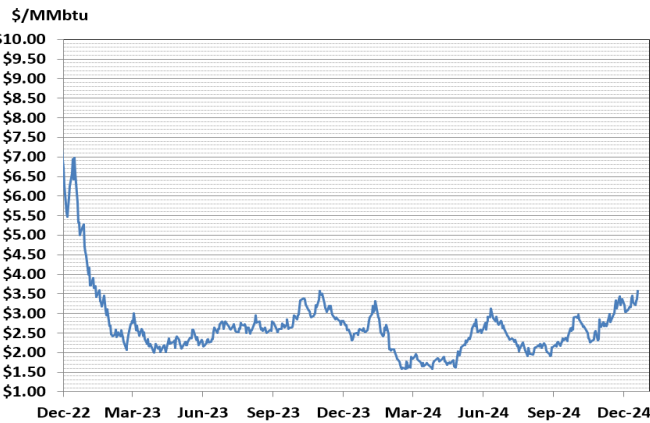
12-month strip is January '25 – December '25

Summer strip is April '25 – Oct '25

Winter strip is Dec '25 – Mar '26

## Near-Month Natural Gas

### Futures Prices (NYMEX) through Dec 19, 2024



## Storage Report

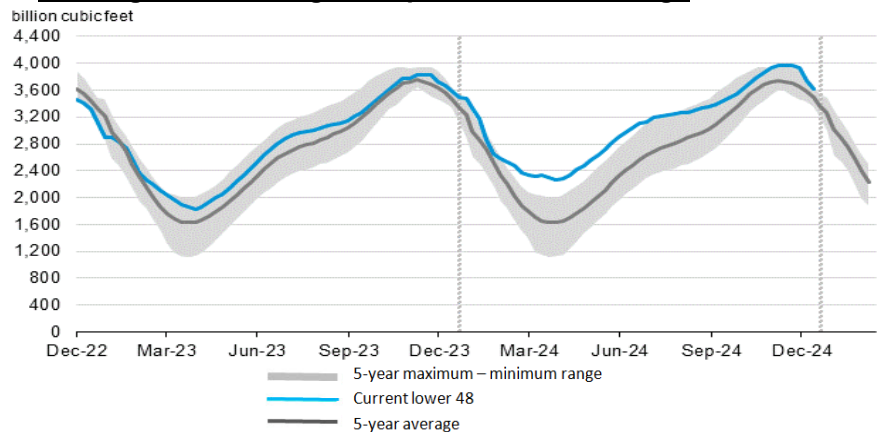
For the week ending December 13, 2024, natural gas storage reported by the Energy Information Administration (EIA) was (in Bcf):

This Week	Last Week	Last Year	5 Yr. Ave.
3,622	3,747	3,602	3,490

Change this week: -125 Bcf Change for the same week last year: -78 Bcf

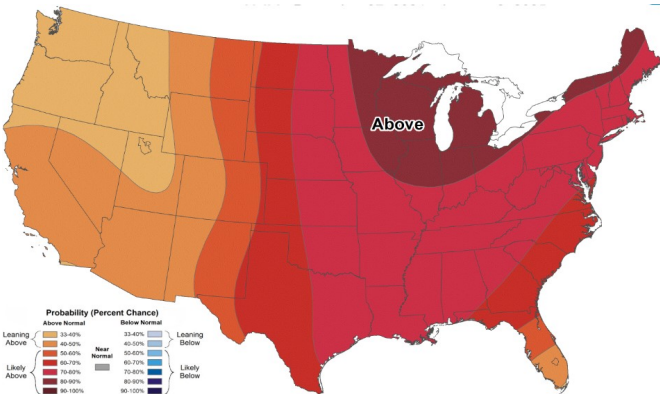
Inventory vs. 1 Year ago: +0.6% Inventory vs. 5-Yr. Ave: +3.8%

### Working Gas in Storage Compared to 5-Year Range

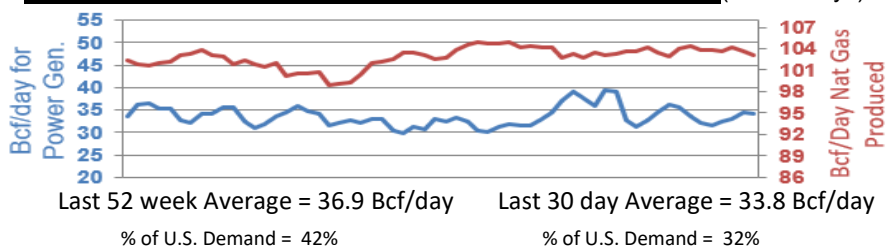


## Temperature Forecast

### December 27 2024 through January 02, 2025



## Daily Nat Gas Use For U.S. Power Production (last 60 days)



For more information on anything addressed in this report, please contact your Sales Manager.

Sources: NOAA, EIA, CME Group and Baker Hughes